

## Bariatric Anterior Safety Roller

HCPCS: E1399-1,E1399

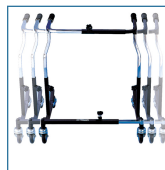


FIGURE A



FIGURE B

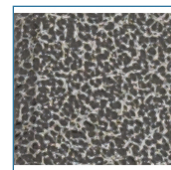


FIGURE C



FIGURE D

- Welded steel frame
- Height adjustable in 1" increments
- Width adjustable (Figure A)
- Adjustable-brake spring tension
- Patient is situated in the center of the Safety Roller, which provides maximum support and improved posture
- Skid-resistant, non-marring, easy-rolling neoprene wheels Ideal for indoor and outdoor use
- Folds easily and stands on its own in the folded position (Figure B)

### PRODUCTS

#### Description

CE 1000 XL	BariatricSRoller,500lb cap,Blk, 1/cs
------------	--------------------------------------

### SPECIFICATIONS

#### Description

Carton Shipping Weight	24 lbs.   35 lbs.
------------------------	-------------------

Handlebar Height	29" - 36"
------------------	-----------

Warranty	Limited Lifetime
----------	------------------

### ACCESSORIES

#### Description

CE 1250	OxygenTank Holder,1/bx, BX
---------	----------------------------

CE 1400	Dial-A-Speed Tab,1pr/bx, BX
---------	-----------------------------

CE 1500	Caster Lock Bracket,1pr/pkg, EA
---------	---------------------------------

CE 1286	Seat, Anterior Safety Rollers, 1/ea, BX
---------	---

CE 1270	Extended Uprhts,Roller,1pr/bx, BX
---------	-----------------------------------

CE 1287	Seat for CE OBESE XL,1/bx, BX
---------	-------------------------------

CE 1035 FP	ForearmPlatform&MountingBracket,1pr/bx, PR
------------	--