

atHand™

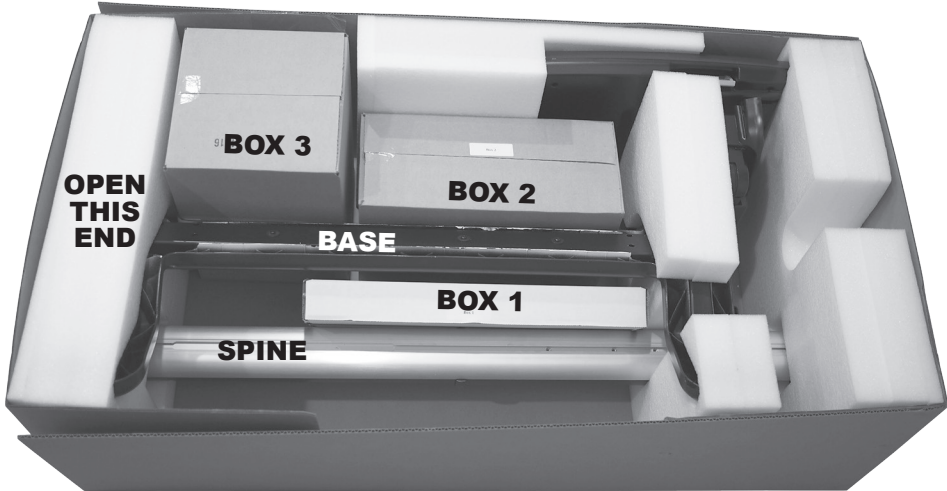
OVERBED TABLE SYSTEM



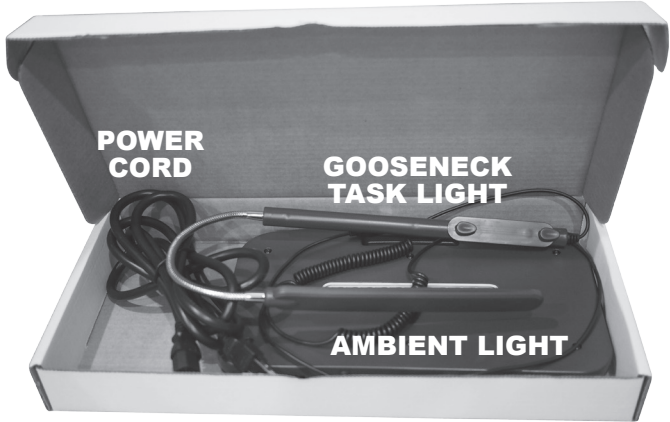
A properly assembled product is shown above
(with optional accessories).

ASSEMBLY INSTRUCTIONS

Before assembly, open inner boxes and confirm contents: Box #1, Box #2, Box #3, Base, Spine.



BOX 1



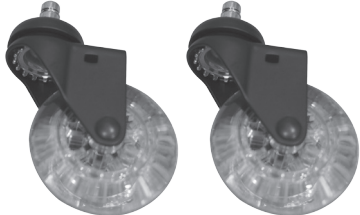
BOX 2



2 LOCKING CASTERS



2 CASTERS



HARDWARE KIT



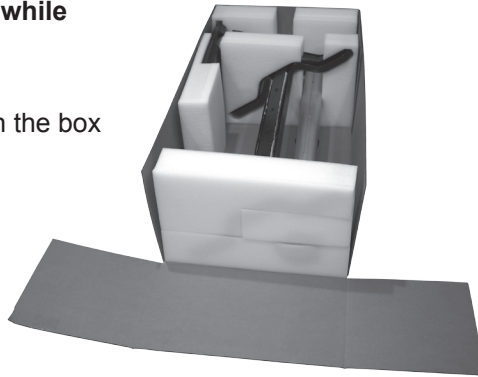
BOX 3



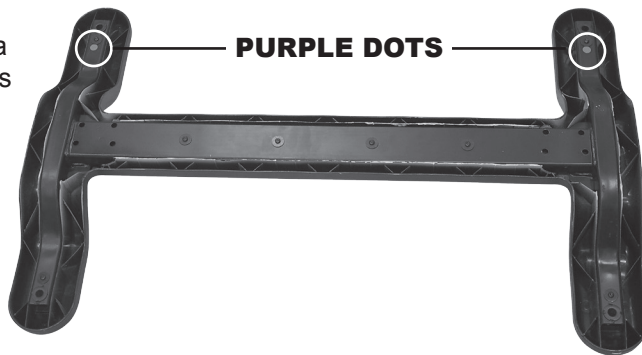
PREPARING FOR ASSEMBLY

Keep the main box and unit lying flat while performing these steps.

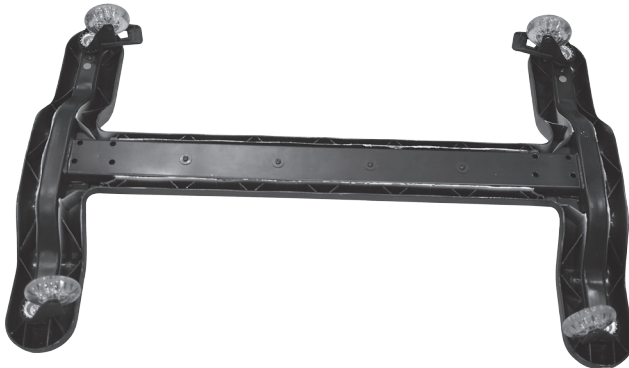
1. Set aside Boxes 1, 2, and 3.
2. Locate the "Open This End" sticker on the box and open the flaps so they lay flat.



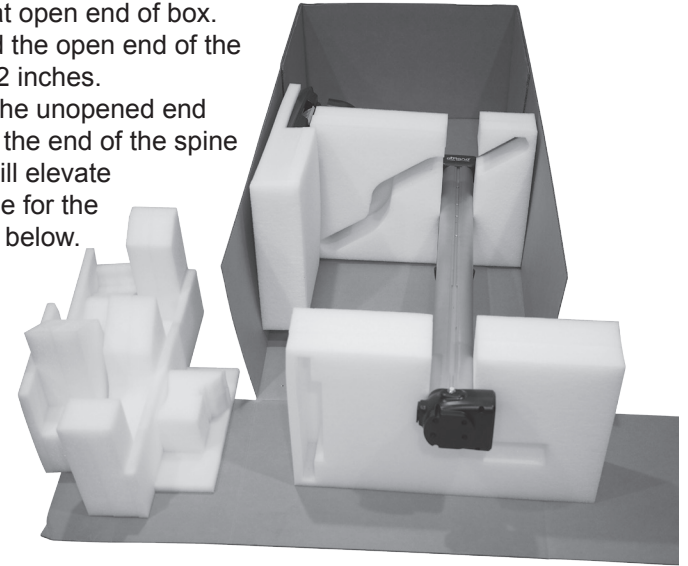
3. Remove the base and place it face down on a flat surface; purple dots should be visible.



4. Push locking casters into the holes on the ends marked with purple dots.
5. Push non-locking casters into the holes on the opposite ends.

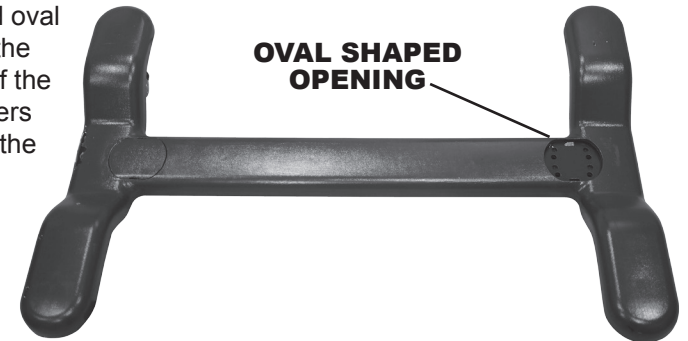


6. Next, remove foam at open end of box.
7. Pull the spine toward the open end of the box approximately 12 inches.
8. Take the foam from the unopened end of the box and place the end of the spine in the cut out. This will elevate and position the spine for the next steps as shown below.

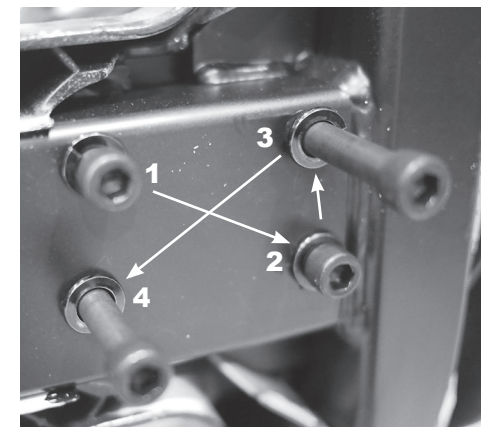


ASSEMBLING THE BASE TO THE SPINE

1. Align the uncovered oval shaped opening in the base with the end of the spine. Locking casters should be touching the floor.



2. From the hardware kit, place one washer onto each of the four screws and insert into each of the 4 holes located on the underside of the base.
3. Using the hex wrench provided in the hardware kit, tighten each screw, following an X pattern.
4. Remove the piece of foam from under the spine. Tighten the screws again if necessary.
5. Carefully stand the unit into an upright position.



ASSEMBLING THE SHELVES

1. Remove the lower shelf from box 2 and upper shelf from box 3.
2. Connect the shelves to each other by sliding the lower shelf into the rails on the bottom of the upper shelf.



3. Locate the wide slot at the bottom of the spine.
4. Place the connected shelves into the slot and slide in and up the spine. The lower shelf with side handles should be closest to the base.



5. Select the desired height of the shelves and secure upper shelf onto spine using one thumb screw from the hardware kit. If additional shelves will be used, secure into the upper most hole.
6. Remove the drawer from the lower shelf and secure with the second thumb screw from the hardware kit.
7. Replace the drawer in either the upper or lower shelf.



8. Slide the ambient light into the rails at on the bottom of the lower shelf.



- Connect the female end of the power cord to the male inlet on the base, then plug into any household outlet.



- Plug in the USB cord for the ambient light into any USB port.



- Select a position for the gooseneck light in any accessory mounting holes. Push in then down to lock into place and plug into any USB port.



INSTRUCTIONS FOR USE

The atHand table should not be used as a bed rail, to assist with walking or to support the user's bodyweight in any way.

Tray Table:

- Adjust the tray table to the desired height.
 - a. Tray table can be lowered by squeezing the handle on either side of the tray table, then gently pushing down.
 - b. Tray table can be raised by pushing up on the table or arm.



- Tray table hinge can be folded for storage by squeezing the handle on the far end of the tray and lowering it toward the spine.
- For added comfort, the tray table can be rotated by pulling the far end towards the user.

Shelves:

- Shelf modules can be adjusted vertically by loosening the thumb screws and raising or lowering to one of the pre-set holes. Retighten the thumb screws.

Lights:

- Lights are touch on/off, each with three levels of brightness. Turn on the gooseneck task light by touching anywhere on the top surface. Turn on the ambient light by touching anywhere on the front silver surface.



Cleaning:

- Clean all surfaces as needed with soapy water or a household disinfectant.

ENJOY YOUR atHAND OVERBED TABLE SYSTEM!

INSTRUCTIONS FOR USE



Optional Accessories Available Separately:

- An accessory pack includes one each of:
 - a. Cup/Remote holder
 - b. Trash bin with lid
 - c. Shelf basket
 - d. Small bin
- Additional open shelf
- Additional drawer

Visit www.integrantllc.com for ordering details.

Warnings:

Max power rating for power outlets: 125V

Max weight capacity of storage compartments: 5 pounds each

Max weight capacity of tray table: 100 pounds

This product is not intended for use as support or bed rail

For indoor use only

Electrical components are safety agency listed: UL, CSA or equivalent.

Warranty:

At Integrant, we take great pride in the quality and craftsmanship of our products. Attention to design, materials, construction and safety is our priority. We carefully inspect your order prior to shipment.

Upon receipt, please inspect your purchase and notify us of any damage or defect immediately. We will arrange for a prompt replacement.

If, within 30 days of receipt, you are dissatisfied for any reason, you may return your purchase for a full refund of the merchandise value. Simply return the unused item in its original packaging to the address below. You are responsible for return shipping costs.

The product is warranted against defects for three years.

Visit integrantllc.com for details.

INTEGRANT™

Manufactured by:
Integrant LLC
12315 York Delta Drive
North Royalton, OH 44133
440-628-9550
www.integrantllc.com